



**HEPWORTH
PANTOGRAPH**



STRAIGHT LINE

Performance Designed
Wiper Systems



High quality,
precision engineered
Stainless Steel Fittings
and Deck Hardware



**HEPWORTH
FABRICATIONS**

Manufacturer of
Fabricated and
Precision Engineered
Components

- Quote of the Month
- New Cruise Ships
- MMI Update
- InfraRail 2016
- Rail Sport
- Subcon 2016
- Automechanika 2016

www.b-hepworth.com

Hepworth International Business and Newsletter

Issue 31

April 2016

Quote of the Month

“Strive for perfection in everything you do. Take the best that exists and make it better. When it does not exist, design it” Sir Henry Royce

Marine

The latest ship to join the Carnival Cruise Line features 35 Type C Wynn Straight Line windscreen wipers with 8000 Series Control System and two Clear View screens. The **Carnival Vista**, scheduled for delivery in April 2016, is being built by the Fincantieri shipyard of Monfalcone (Gorizia). Sea trials were completed in March 2016 and it is due for final delivery in April 2016. The ship's maiden voyage is set to embark on May 1, 2016 from Trieste, Italy, on a 13 day Europe Cruise that ends in Barcelona, Spain.

At 133,500 tonne, she will be the largest ship within Carnival Cruise Line's fleet, is 1062 feet long and has capacity for 3934 guests and 1450 crew.

Another fabulous new Cruise Liner, Holland America's new ship the **Koningsdam**, is fitted with 23 Type C Wynn Straight Line wipers with 8000 Series Control System and two Clear View screens. It will be the biggest ship in the fleet, hence its name: "Koning" means "king" in Dutch.

The 99,500-ton, 2,650-passenger vessel, built at the Fincantieri shipyard in Marghera, Italy, will preserve classic Holland America touches, including a traditional teak promenade and the lines successful Culinary Arts Center. The ship will also add a number of firsts for the line, such as family ocean view cabins and a two-tiered Lido Pool area with an outdoor movie screen.

Following the official handover ceremony on April 2nd, the ship then sailed from the yard on April 3, making its way to Rome, Italy, for its Premiere Voyage scheduled to depart on April 8. The Koningsdam will spend the summer cruising Europe before making its way to Fort Lauderdale to begin Caribbean itineraries starting in early November.

Harmony of the Seas, the world's largest luxury cruise ship took to the seas for the first time on March 10th in the port of Saint Nazaire, western France.

Fitted with 18 Type C Wynn Straight Line wipers and 8000 Series Control System, the 120,000-tonne ship has been built by STX France at a cost of \$1.1bn (£770m), is 362m (1,187 ft) long and weighs 227,000 tonne. Stood on its end it would be 50m (164ft) taller than the Eiffel Tower and is almost 100m (328ft) longer than the Titanic! Harmony is a meter wider than the current twin ocean-going monsters of the pleasure cruise world, which are also 362 meters long.

Further trials will take place before the end of April, with delivery set for May 12 when the giant vessel is due to sail from Southampton to Barcelona on its maiden voyage.

Monitor Marine

Following last months increase in scheduled production orders, our main volume boat builders all pulled forward their delivery schedules, which included a resumption of orders for the new Fairline models.

Helicopter Tie-Down orders are increasing month-on-month and include contracts received from Superyacht builders in Australia and Italy, plus large orders for the recently launched range of Multi-Purpose Connectors adapted for awning and bimini



**HEPWORTH
PANTOGRAPH**



STRAIGHT LINE

Performance Designed
Wiper Systems



High quality,
precision engineered
Stainless Steel Fittings
and Deck Hardware



**HEPWORTH
FABRICATIONS**

Manufacturer of
Fabricated and
Precision Engineered
Components

www.b-hepworth.com

supports have found wide appeal with orders flowing in from builders in Holland and Scandinavia.

This month the Monitor Marine product range will be shown to International Buyers at the British Marine **Superyacht UK Tour of Excellence** event in Portsmouth on the 20th April.

Demand is increasing for Helicopter Tie-Downs from the Offshore Industries, so the comprehensive range of commercial models will be shown at the forthcoming Offshore Technology Conference (OTC) and Trade Show, Houston, Texas, from 2nd May to 5th May.

Rail

Ian Lockett, Technical Rail Manager and Luke Russell, Fabrication Sales Executive will be attending the InfraRail Exhibition, held at the Excel London during 12th -14th April. If you would like to schedule a meeting or have any questions prior to the event, please do not hesitate to contact a member of the Rail or Fabrication team. We look forward to see you there.



THE UK'S DEFINITIVE **RAILWAY INFRASTRUCTURE** EXHIBITION
12 - 14 APRIL 2016 | EXCEL, LONDON, UK www.infrarail.com
Hepworth International, find us on Stand B80

A team from Hepworth will be attending Rail Sport, an annual event that brings together the rail community for a weekend of fun and networking. Leasing companies such as Angel Trains and Porterbrook, plus lots of the Train operators such as Virgin Trains, East Coast, etc. will be at the event. It also caters for rolling stock manufacturers such as Bombardier, Alstom and suppliers of items into the rail industry. This event is a great opportunity to meet with colleagues throughout the industry whilst having a jam-packed weekend of fun.

Date: **Sat 11th - Sun 12th June**

Location: **Stanley Park, Blackpool, FY3 9HU**

If you are attending the event, we look forward to seeing you there.

Hepworth Rail have received their first order from CZ LOKO, a new customer based in Czech Republic. The product included dual pendulum windscreen wiper systems being fitted to Locomotive.

Ian Lockett, Technical Rail Manager and Alastair Timmis, Rail Account Manager will be visiting customers in Italy and Spain during April.

Fabrication

Hepworth Fabrication will be exhibiting for the first time at Subcon, a manufacturing supply chain show, dedicated to subcontracting and outsourced engineering services. The show has been designed to connect buyers with suppliers across manufacturing supply chains, matching visitor needs to the capabilities of world class exhibitors. *Subcon Expo-UK* is a 3 day event being held from 7th - 9th June 2016 at the National Exhibition Centre (NEC) in Birmingham, United Kingdom.

Automotive

For the first time, **AUTOMECHANIKA** is being held in the UK this year, from 7th to 9th June at the NEC, Birmingham. Hepworth International will be exhibiting some of their latest automotive products on Stand No. 11 L 40 where their technical design and engineering team will be able to discuss our high quality production capabilities.

automechanika
BIRMINGHAM

The UK's leading exhibition for the
automotive supply chain & aftermarket.

→ see us on
stand 11L40

7-9 June 2016
NEC Birmingham

→ register for
free now!



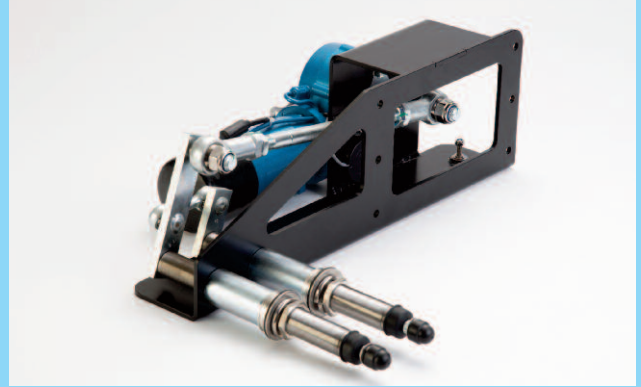
Showing the way.....



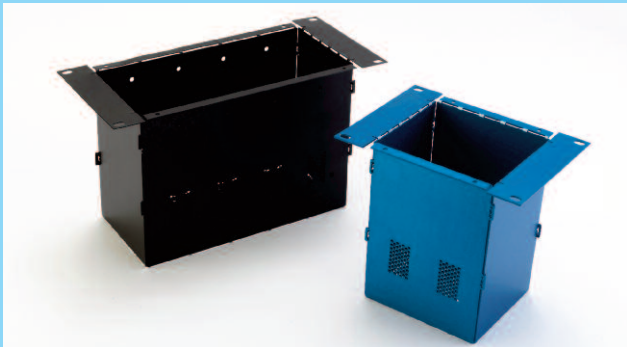
HEP WORTH MARINE INTERNATIONAL



18' 99. +
 ,47+,7439 4, *+8/-3 ' 3* 2' 3: ,')9: 7+ <19. 4: 7
 -14 (' 11> 7+)4-3/8+* %>33 "97' /-. 9 /3+ </5+78
 +5<479. ' 394-7' 5. ' 3* +3*: 1: 2 </5+7
 8>89+28 ' 884)' 9+* <' 8. 5: 258 ' 3*)439741 : 3/98
 ,479. + ' 7/3+ /3*: 897> %+ 4,,+7 +=) +11+39 6: ' 1/9>
 ./-. 5+7,472' 3)+ ' 3* 1+; +18 4, 7+1/ (1/9> ' 3*
 8' ,+9> 9. ' 9 8' 9/8, > 9. + 3++*8 +=5+)9' 9/438 ' 3*
 7+6: /7+2+398 4, 4: 7): 8942+78 %+ ' 7+ 8: 55479+*
 (> 4; +7, 479> /897/(: 9478 <471* </1*+ ' 3* 4: 7
 8+7;/) +8 /3)1: *+ 8' 2+ *' > 85' 7+8 *+85' 9).



18 9. + /39+73' 9/43' 1
 2' 70+91+ ' *+7 ,479. + *+8/-3 2' 3: ,')9: 7+ ' 3*
 8: 551> 4, </3*4 < /5+78 <' 8. +7+6: /52+39 ' 3*
 ' 884)' 9+*)439741 8>89+28
 +5<479. /8 '))7+* /9+* <19. /39+73' 9/43' 11>
 7+)4-3/8+* 7' /1' 5574; ' 18 ' 3* 89' 3*' 7*8 8:). ' 8
 ! " " ' 3* : 8/3- /334; ' 9/; +
 +8/-3 ' 3 ,4114 </3- 897:)9: 7+* *+; +1452+39
)7/9+7/ ' <+ +38: 7+ 9. ' 9 <+)4389' 391> *7/; + 9. 4: -.
 /2574; +2+398 94 4; +7' 11 8' ,+9> 6: ' 1/9> ' 3* 7+1/ (1/9>



4,,+78 ' 949' 18+7;/) + /3
): 8942 2' *+ ,')9/43 /3 ' </1*+ ; ' 7/1+9> 4,
 2+9' 18 ' 3* ,4728 +>)' 5' (1/9/8 /3)1: *+1' 8+7
): 99/3- 5: 3). /3- ' 3* 2'). /3/3-)4*+*
 <+1*/3- 54<+7)4' 9/3- ' 3* 2+9' 154/8. /3-
 *+8/-3 8+7;/) +8 *7' </3- 8+7;/) + +1+)97/)' 1
 ' 3* 2+). ' 3/)' 1' 88+2 (1> 6: ' 1/9> "



4,,+78
 /334; ' 9/; + *+8/-3 *+; +1452+39 ' 3* 2' 3: ,')9: 7+
 4, 9. + ./-. +89 6: ' 1/9> 57+) /8/43 +3- /3++7+*
 89' /31+88 89++1 ,/99/3-8 ' 3* *+) 0. ' 7* <' 7+ ,47
 " : 5+78'). 9 ' 3* 6: ' 1/9> (4' 9 (/1*+78

+78+ !4' * 479. 4438 4' 9 !+**/9). %47)+89+78. /7+
 # ?

\$3/9+* /3- *42

2' 7/3+ (. +5<479.)42 ? 7' /1 (. +5<479.)42 ? ,')9/438 (. +5<479.)42 ? 22/ (. +5<479.)42

". 4: 1* >4: 8: (8+6: +391>). 448+ 94 : 38: (8)7/ (+ ,742 9. + +5<479. 39+73' 9/43' 1 2' /13- /89 51+ ' 8+) 439')9 : 8 94 7+24; + >4: 7 *+9' /18